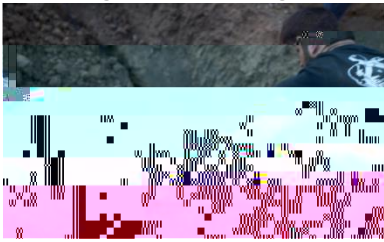




The

The Center for Infrastructure, Energy, and Space Testing (CIEST), is an experimental testing facility with geotechnical centrifuge, structural dynamics, and materials testing.

The geotechnical facility houses three centrifuges, including a 400 g-ton centrifuge that is amongst the most powerful in the United States, that is, used for research, industry, and educational purposes related to the characterization of geotechnical engineering systems (e.g. dams, foundations, pipelines) and the fundamental mechanical, hydraulic, and thermal properties of soil.



The center includes multi-scale shake tables, strong floor, load reaction blocks, and hydraulic equipment capable of applying up to 1 million lb (4450 kN) and loading rates up to 100 in./sec (2.5m/sec).

Our lab can conduct combined mechanical and environmental loadings (variations of temperature, pressure, humidity, and chemicals) to simulate actual service conditions of structures.



Always hiring interested UG/Grad research assistants. Check us out at: www.colorado.edu/center/ciest/

The Construction Safety Research Alliance (CSRA) is a unique community of industry practitioners and academic researchers who collaborate to create and share new knowledge about construction worker safety.

The Mission of CSRA is to eliminate serious incidents and fatalities in the construction industry with transformative research and defensible science.

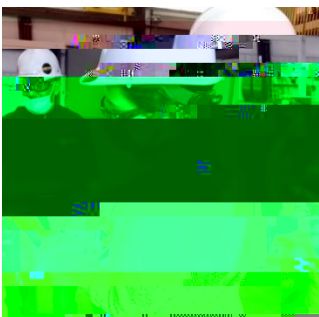
The CU team includes an Executive Director (professor), Assistant Research Professor, Senior Research Associate, an Operations Manager, and over a dozen funded students

The CSRA has over 300 active industry partners who represent all major sectors of the North American Construction Industry

Our research is co-created with our industry partners; over 80 firms from across the US and Canada including Kiewit, CAT and Skanska.

We publish and present our work on a global stage and host an annual CSRA Safety Summit at CU which in 2022 hosted 200+ safety professionals on campus, and broadcasted to a further 300+ across the world.

Find out more here: [Home | Construction Safety Research Alliance \(colorado.edu\)](http://Home | Construction Safety Research Alliance (colorado.edu))



The Kiewit Design Build Scholars Program is a corporate funded opportunity for any full-time engineering student who is interested in infrastructure design and construction.

The program has four main pillars – financial aid, a mentorship program, site tours and events, and opportunities for internship. We are in the third year of the program and typically have around 40 students in the cohort each academic year.



Kiewit hopes to guide more students to choose heavy-civil and infrastructure design as a career path and support them holistically through their academic experience.

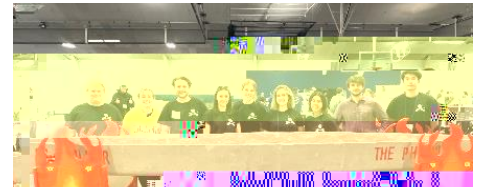
Architectural Engineering Institute (AEI)

The AEI Chapter is a student organization dedicated to understanding and advancing the state-of-the-art of the architecture, engineering, and construction (AEC) profession through networking, design competitions, & learning experiences in the AEC community.



Associated General Contractors (AGC)

We strive to promote the construction industry in three areas which include education, service, and networking, and we have construction professionals speak at every weekly meeting to present on a specific project or on their company.



American Society of Civil Engineers (ASCE)

Our chapter coordinates with industry members to learn about opportunities within Civil Engineering, and compete in the Concrete Canoe, Innovation, Sustainability, Surveying, and Steel Bridge competitions through the ASCE Rocky Mountain Regional Symposium.

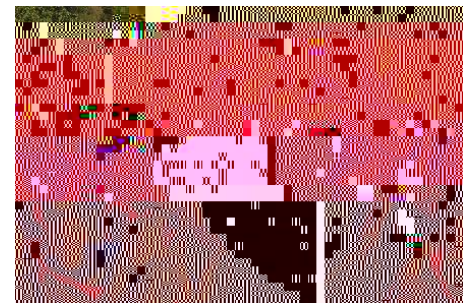


American Society of Heating, Refrigeration and Air Conditioning Engineers

Our chapter coordinates events, including industry expert talks/presentations, innovative academic research talks, technical workshops, site visits, and social events, helping you to network with industry professionals, stay up to date with research and industry best practices, and offer hands-on experience with HVAC equipment.

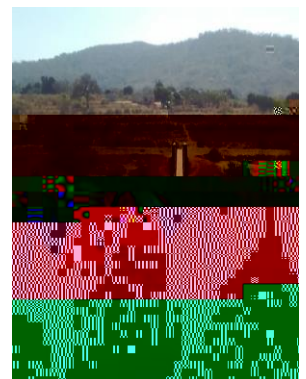
Bridge Buffs

Bridge Buffs is the CU Chapter of a national NGO called Engineers in Action, a non-profit organization that designs and builds pedestrian footbridges, and is dedicated to reducing poverty created by rural isolation by building pedestrian bridges over impassable rivers in communities that would otherwise be unable to afford them.



Engineers Without Borders (EWB)

EWB's mission is to partner with developing communities to improve quality of life through environmentally sustainable, equitable, and economical engineering projects. Our chapter was the first chapter of EWB-USA.



Illuminating Engineering Society

The CU IES Chapter is a community committed to inspiring those interested in lighting by providing tools for career success and building a shared knowledge base, while promoting engagement with industry professionals and each other.



The following companies have hired our undergraduate students:

- Adolfson & Peterson Construction
- AECOM
- AEI | Affiliated Engineers, Inc.
- Air Force Civilian Service
- Alfred Benesch & Company
- Ames Construction Inc
- Apex Engineers, Inc.
- Arcadis
- ARCO/MURRAY Natl. Construction
Company
- Barnard Construction
- Big-D Construction
- BranchPattern
- Brinkmann Constructors
- Bureau of Reclamation